

# ■ Our products

## Pipes:

- Integrated socket and spigot
- Diameters range from DN/ID 300mm to DN/ID 4000mm
- Lengths range from 1m up to 6m and longer on special request
- Black from outside yellow from inside.



# ■ Our products

## Pipes:

Our high quality Polyethylene pipes:

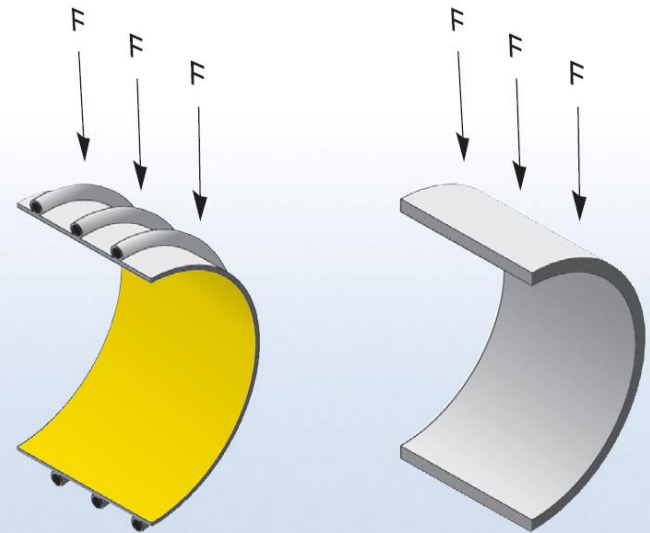
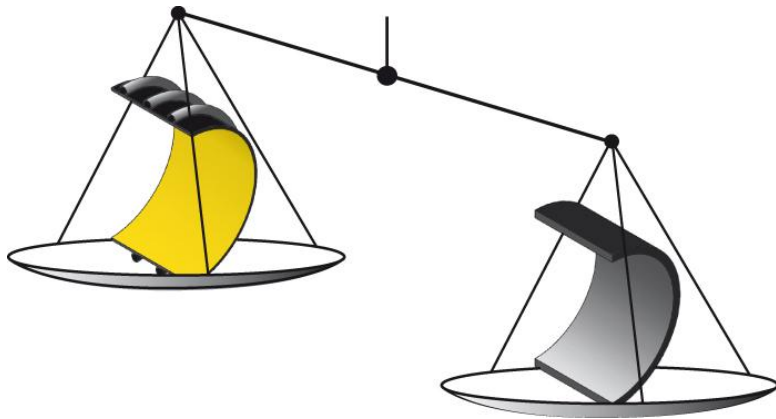
- Have a long failure-free and cost-efficient service life
- Have a slow rate of depreciation (i.e. over 50 years)
- Have low maintenance costs (such as cleaning)
- Are light-weight, durable and easily extendable
- Are 100% recyclable and environmentally friendly



# ■ Our products

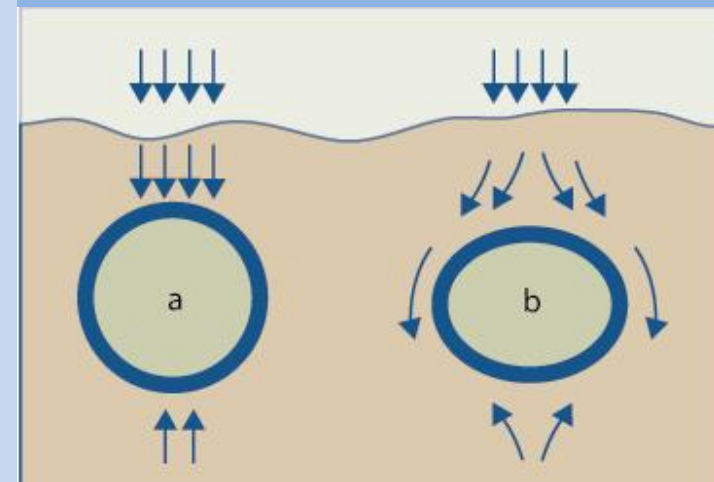
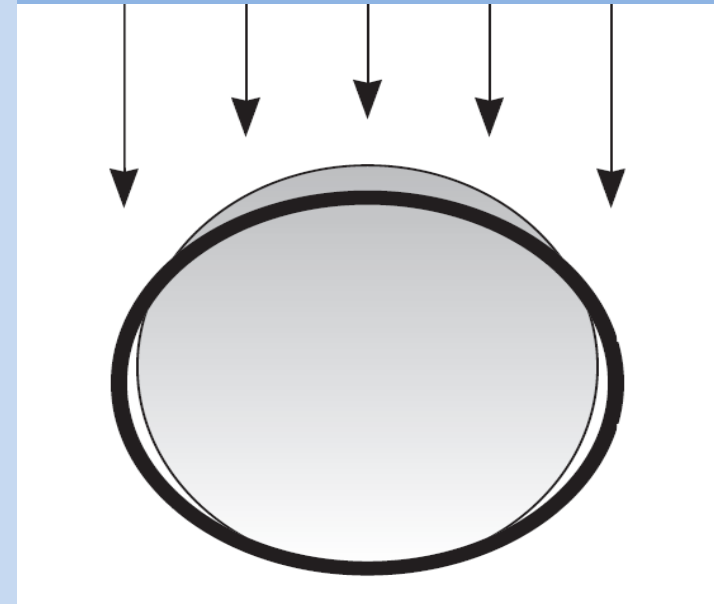
## Why structured wall pipe?

By using structured wall pipes 65% of the weight can be saved compared to equivalent solid wall pipes with the same statical capacity.



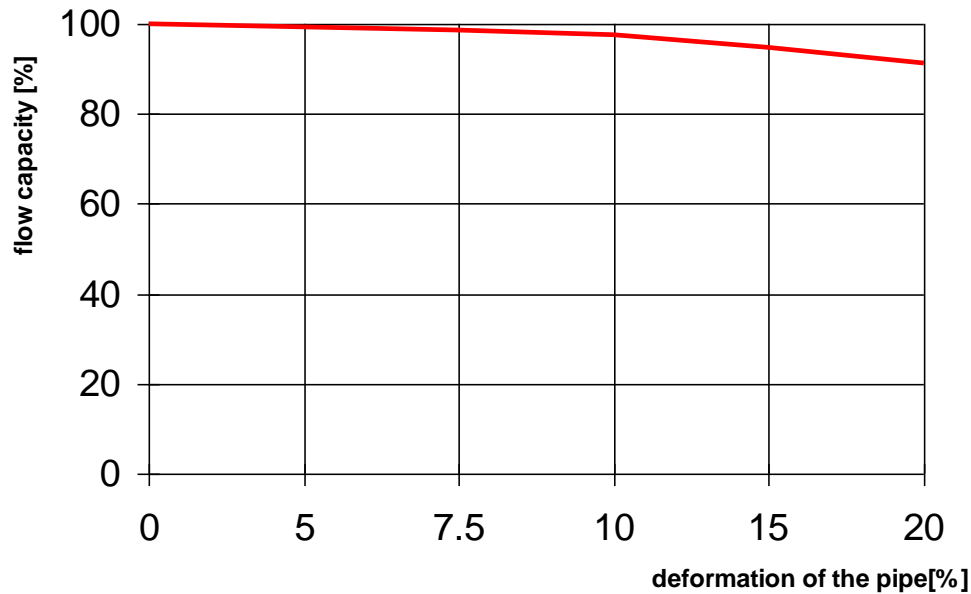
# ■ Our products

- **What bends does not break!**
- Even under heavy load conditions  
Krah
- pipes hardly get damaged in contrast  
to rigid pipe materials





# Our products



- Most damages occur due to loads
- Flexible pipes deform in case of over-load and release the loads to the ground
- The result is a change of the cross-section, but pipes remain leak tight and flow-capacity is almost optimal



# ■ Our products

- **Krah pipes are 10 times lighter than concrete pipes!**



# ■ Our products

- **Easy to store**



# ■ Our products



- **Easy to load**



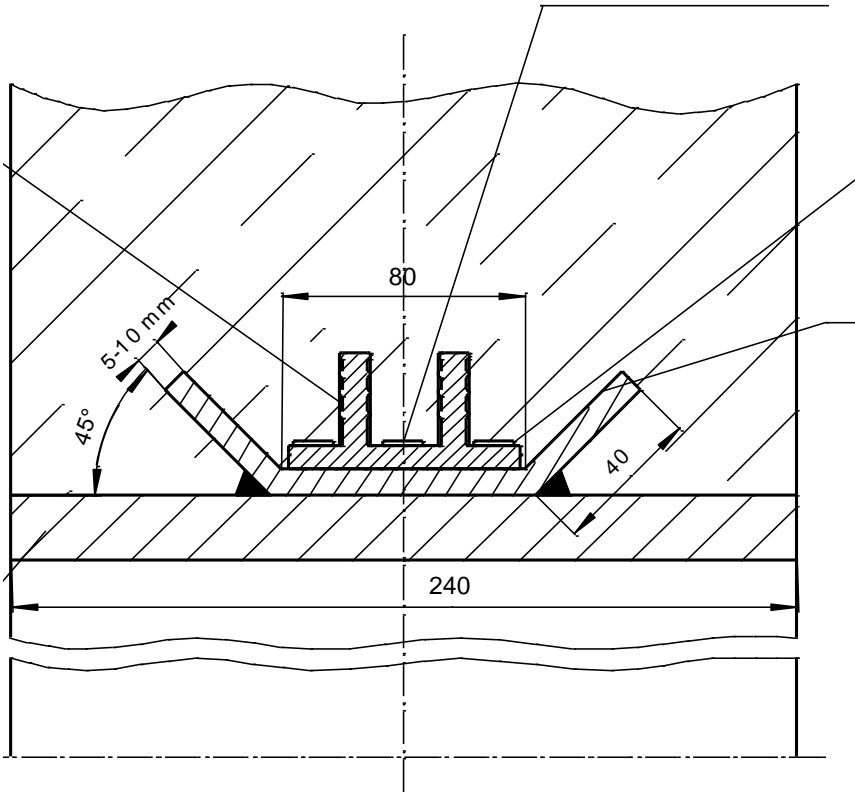


# ■ Our products

- **Easy to handle and transport**



# Our products



# ■ Our products



## **Pipes:**

Our pipes can be produced in a great variety of dimensions. This allows them to have various applications, including manholes and house connections.

